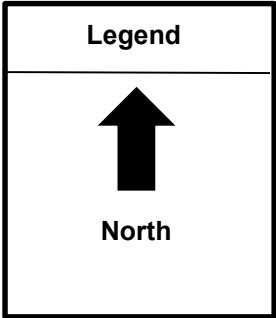
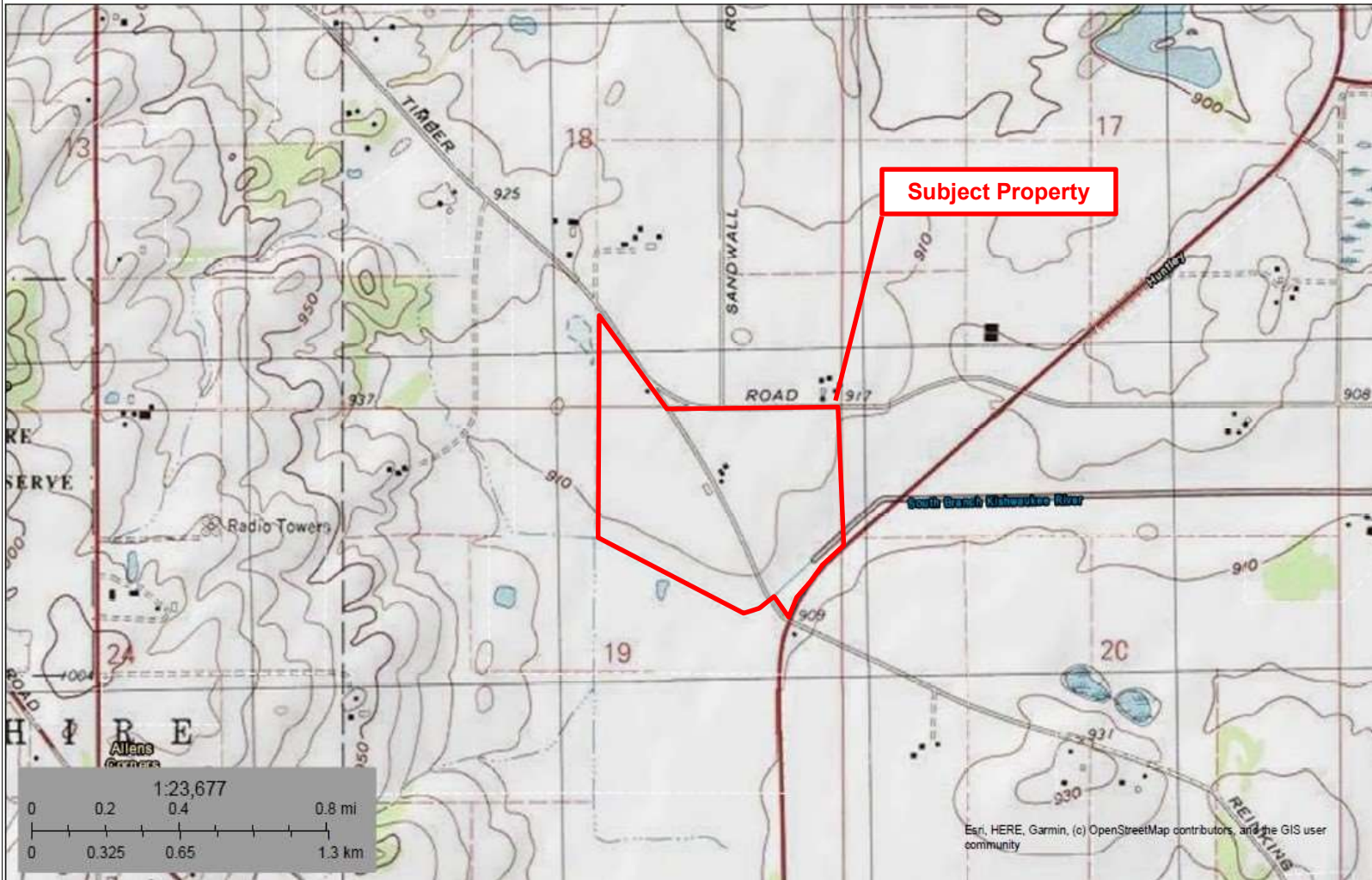


U.S.G.S. Topographic Map



U.S. Fish and Wildlife Service
National Wetlands Inventory

USGS Topographic Map



AAI Phase I Environmental Site Assessment
Performed at:
+/- 107.87 Acres, P.I.N. # 02-18-400-009,
02-19-200-006 & 02-19-200-007
Hampshire, Illinois 60140

Performed For:
Mr. Akshar Patel
Rutland East Solar Farm LLC
141 W. Jackson Boulevard, Suite 1692
Chicago, Illinois 60604

Project # 2024252
Date: November 25, 2024

Drafted by: Alexandra Cook